

## Colichrom-NPS

Version: 01/2020  
M&S item numbers: 1035 (50 / PK) and 1035-H (100 / PK)  
Profile: Dehydrated nutrient pad sets 50 mm in petri dishes, sterile  
Color: White  
Storage: Dark and dry at room temperature  
Shelf life: 2 years after sterilization

### Description and application range

Colichrom-NPS are used for the detection of *Escherichia coli* and other coliforms from water with low accompanying flora (according to DIN EN ISO 9308-1:2014+A1:2017) and from beverages. With Colichrom-NPS coliforms can be cultivated and differentiated selectively by color. Gram-positive bacteria are largely inhibited by Tergitol-7 and the chromogenic components easily allow detection of *E. coli* (blue colonies) and coliforms (pink to purple colonies) among accompanying non-coliforms growing as beige colonies. The medium is manufactured and quality tested in compliance with ISO 11133:2014 + Amd 1:2018 standard.

### Typical composition

|                            |          |
|----------------------------|----------|
| Enzymatic digest of casein | 1.0 g/l  |
| Yeast extract              | 2.0 g/l  |
| Sodium chloride            | 5.0 g/l  |
| Sodiumdihydrogenphosphate  | 2.2 g/l  |
| Disodiumhydrogenphosphate  | 2.7 g/l  |
| Sodiumpyruvate             | 1.0 g/l  |
| Tryptophan                 | 1.0 g/l  |
| Sorbitol                   | 1.0 g/l  |
| Tergitol-7                 | 0.15 g/l |
| Chromogenic mix            | 0.4 g/l  |

Final pH: 6.8 ± 0.2 at 25 °C

### Microbiological quality control

#### Bacterial contamination

Incubation: aerobically at room temperature for 3 days, specification: no growth

#### Productivity quantitative analysis

Incubation: aerobically at 36 ± 2 °C for 21 + 3 h, approx. inoculum: 80 – 120 CFU

| Microorganism                 | Test strain | Specification  | Appearance     |
|-------------------------------|-------------|----------------|----------------|
| <i>Escherichia coli</i>       | WDCM 00012  | $P_R \geq 0,7$ | Blue           |
| <i>Enterobacter aerogenes</i> | WDCM 00175  | $P_R \geq 0,7$ | Pink to purple |

**Selectivity** qualitative analysis

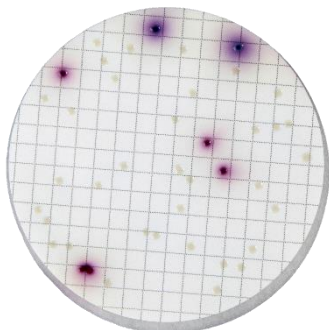
Incubation: aerobically at  $36 \pm 2$  °C for 21 + 3 h, approx. inoculum: 10,000 – 1,000,000 CFU

| Microorganism                | Test strain | Specification   | Appearance |
|------------------------------|-------------|-----------------|------------|
| <i>Enterococcus faecalis</i> | WDCM 00009  | Full inhibition | -          |

**Specificity** qualitative analysis

Incubation: aerobically at  $36 \pm 2$  °C for 21 + 3 h, approx. inoculum: 80 – 120 CFU

| Microorganism                 | Test strain | Specification | Appearance |
|-------------------------------|-------------|---------------|------------|
| <i>Pseudomonas aeruginosa</i> | WDCM 00024  | Growth        | Beige      |



Mixed culture with *Escherichia coli* (2 blue colonies), *Enterobacter aerogenes* (4 purple colonies) and *Pseudomonas aeruginosa* (many beige colonies) after 20 hours at 37 °C.